

William Stukeley Church of England Primary School



Our whole school
attendance so far
this academic year...

94%



Stukeley
Federation

ATTENDANCE

March 2024

*Our aim is to positively promote the importance of attendance at school,
so that children can enjoy the very best education.*

*We have shared this important message with the children in an
assembly.*

Targets & Figures

• Term	•	• Government Target	• William Stukeley
• Autumn 1 (Sept – Oct)	•	• 95%	• 94.23%
• Autumn 2 (Nov – Dec)	•	• 95%	• 93.20%

The following government categories for attendance are as follows:

- 95% and above Expected
- 91-94% At Risk of Persistent Absence
- 80-90% Persistent Absence
- 51-79% At Risk of Severe Absence
- Less than 50% Severe Absence

FACT
365 days in a calendar year
190 School days,
175 non-school days for shopping, holidays and appointments

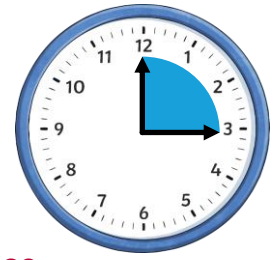
Spalding Road, Holbeach, Lincolnshire PE12 7HG

Phone: 01406 422102 Email: enquiries@williamstukeley.lincs.sch.uk

William Stukeley Church of England Primary School

Arriving late for school:

- 5 minutes late every day = 3 days lost
 - 10 minutes late each day = 33 hours lost in one year
 - 15 minutes late every day = 2 weeks a year
 - 30 minutes late every day = 19 days a year
 - 19 days lost a year through being late means 90% attendance
- 90% attendance through school life is equal to a whole year of school being missed!



Reminders

- Medical, Dental and Hospital Appointments and Absences

Where possible, we encourage appointments to take place out of school time, in order not to disrupt the child's education; every effort should be made to arrange medical appointments outside school hours. Whilst we appreciate that medical appointments are unavoidable and the times not always flexible, such absences usually only take up part of a day so children, for example, could be brought into school for morning registration and return to school following the appointment. School should be informed of such absences in writing in advance, and we also require proof i.e. copy of appointment letter / text message reminder.

- Absence messages

If you need to leave an absence message on the school answerphone, please can we remind parents/carers to leave a specific reason for absence i.e. give details if ill. To ensure the safety of all the children in school we do need to know more than 'feeling unwell' or 'not very well'.

- Please be reminded that our policy is **48 hours absence** from school following any episode of vomiting or diarrhoea.

**90% attendance is the equivalent of having
one school day off every two weeks!**

**80% attendance is the equivalent of having
one school day off every week!**

Spalding Road, Holbeach, Lincolnshire PE12 7HG

Phone: 01406 422102 Email: enquiries@williamstukeley.lincs.sch.uk